



Modular mining container plug-and-play solution for Bitmain, Whatsminer, and Avalon miners

ARK2000

ARK4000

TIANQI MINING CONTAINER

info@asapbtc.com



ARK2000-20ft Mining Container



Can house 189 ASIC miners, compatible with Bitmain, Avalon, Whatsminer



Has 0.63MW Capacity



Efficient cooling 59°F

UL listed for electrical switches and CSA listed for the entire

ARK2000 Overview

Structural Design

- ✓ Special internal structure
- ✓ Ensure no hot air backflow problem in the container
- ✓ Ensure the miners does not overheat

Cooling System

- ✓ 8 high speed negative pressure fans
- ✓ Total airflow up to 160,000CFM
- ✓ Equipped with 4 fans super-efficient evaporation pad

Mining Capacity

- ✓ 5850mm*2180mm*2560mm
- ✓ 189 ASIC miners, compatible with Bitmain, Avalon, Whatsminer
- ✓ 3 shelves, each shelf 7 layers.

PDU

- ✓ Each ARK2000 is equipped with 21 PDUs
- ✓ Allows max wattage while Providing max protection
- ✓ 252 outlet - C19 outlets with a 20A dedicated
- ✓ 21 outlet - C13 outlets with a 5A dedicated

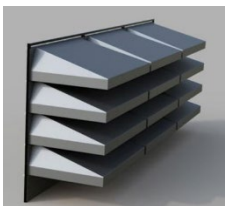
Power System

- ✓ 3 x 400A circuit breakers(3 shelves)
- ✓ 21 x 63A circuit breakers(21 PDUs)
- ✓ 8 x 6A circuit breakers(Fan)
- ✓ 380-415 Volts 5 Wire (3 Poles, Neutral + Ground)

Network System

- ✓ 10 x 24-port 100M switches
- ✓ 200 pcs Super Category 5 network patch cables
- ✓ Complete network layering

ARK2000 Optional accessories



A1

MERV 8 rated filtration system for extreme areas and to block rain and snow



A2

1200A main switch, a one-time disconnection of the entire box of all power, the entire box to achieve four levels of circuit breakers protection.



A3

C20-Double C13 Y-type power cord, adapted to mine box PDU socket



A4

Monitoring system, supporting remote viewing and dual intercom.



ARK4000-40ft Mining Container



Can house 315 ASIC miners, compatible with Bitmain, Avalon, Whatsminer



Has 1MW Capacity



Efficient cooling 59°F

UL listed for electrical switches and CSA listed for the entire

ARK4000 Overview

Structural Design

- ✓ Special internal structure
- ✓ Ensure no hot air backflow problem in the container
- ✓ Ensure the miners does not overheat

Cooling System

- ✓ 18 high speed negative pressure fans
- ✓ Total airflow up to 320,000CFM
- ✓ Equipped with 6 fans super-efficient evaporation pad

Mining Capacity

- ✓ 11750mm*2180mm*2560mm
- ✓ 315 ASIC miners, compatible with Bitmain, Avalon, Whatsminer
- ✓ 5 shelves, each shelf 7 layers.

PDU

- ✓ Each ARK4000 is equipped with 35 PDUs
- ✓ Allows max wattage while Providing max protection
- ✓ 420 outlet - C19 outlets with a 20A dedicated
- ✓ 35 outlet - C13 outlets with a 5A dedicated

Power System

- ✓ 5x 400A circuit breakers(5 shelves)
- ✓ 35 x 63A circuit breakers(35PDUs)
- ✓ 18 x 6A circuit breakers(Fan)
- ✓ 380-415 Volts 5 Wire (3 Poles, Neutral + Ground)

Network System

- ✓ 18x 24-port 100M switches
- ✓ 400 pcs Super Category 5 network patch cables
- ✓ Complete network layering

ARK4000 Optional accessories



A1

MERV 8 rated filtration system for extreme areas and to block rain and snow



A2

2500A main switch, intelligent frame circuit breaker, disconnect the whole box all the power at once, realize the whole box four levels of circuit breaker protection



A3

C20-Double C13 Y-type power cord, adapted to mine box PDU socket



A4

Monitoring system, supporting remote viewing and dual intercom.